

# Congress Elementary School District

Yavapai County

Efficiency peer groups 11 and T-11, Achievement peer group 19

Legislative district(s): 1

District size, location:

Very small, Rural

Students attending:

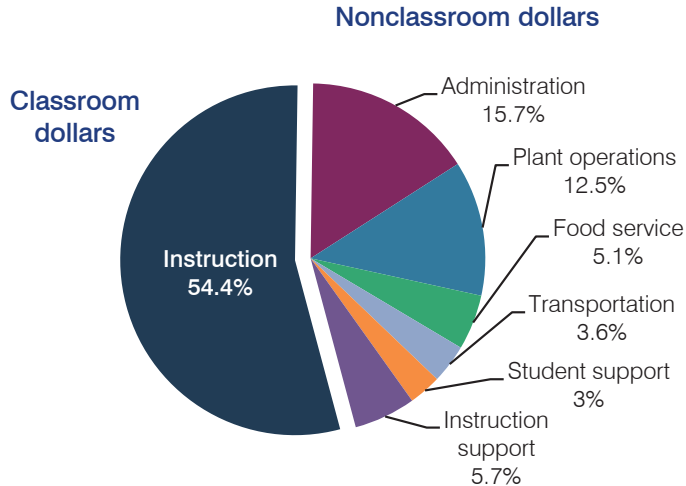
104

Number of schools:

1

## OPERATIONAL EFFICIENCY

### Spending by operational area



### 5-year spending trend

Student enrollment decreased by 15 percent, which contributed to the 37 percent increase in total spending per pupil. Spending in the classroom varied year to year, increasing overall from 52.6 to 54.4 percent. Spending on some nonclassroom areas varied year to year, as is common for very small districts. Spending on transportation decreased.

### Cost measures relative to peer averages

Operational area	Measure	District	Peer average	State average
Administration	Cost per pupil	\$2,151	\$2,572	\$746
	Students per administrator	30	30	67
Plant operations	Cost per square foot	\$6.86	\$6.59	\$6.03
	Square footage per student	251	343	153
Food service	Cost per meal equivalent	\$3.63	\$4.93	\$2.58
Transportation	Cost per mile	\$1.14	\$1.64	\$3.55
	Cost per rider	\$718	\$1,184	\$1,015

### Per pupil spending by operational area

	District		Peer average 2013	State average 2013	National average 2011
	2012	2013			
<b>Total</b>	<b>\$12,087</b>	<b>\$13,740</b>	<b>\$15,203</b>	<b>\$7,496</b>	<b>\$10,658</b>
<b>Classroom dollars</b>	<b>5,997</b>	<b>7,468</b>	<b>7,647</b>	<b>4,031</b>	<b>6,520</b>
<b>Nonclassroom dollars:</b>	<b>6,090</b>	<b>6,272</b>	<b>7,556</b>	<b>3,465</b>	<b>4,138</b>
Administration	2,560	2,151	2,572	746	1,138
Plant operations	1,196	1,720	2,148	924	1,015
Food service	632	704	851	396	412
Transportation	429	499	1,056	369	452
Student support	399	412	548	582	593
Instruction support	874	786	381	448	528

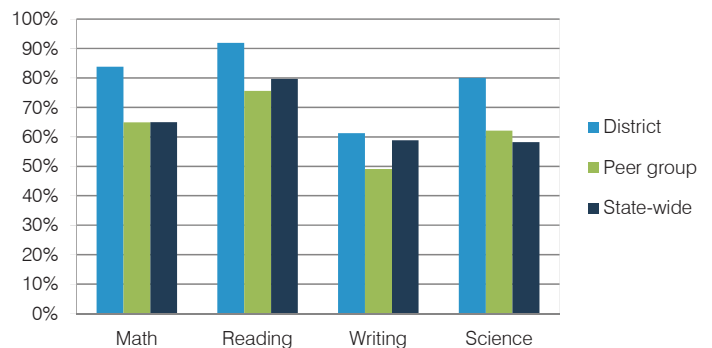
## STUDENT ACHIEVEMENT, TEACHER MEASURES, AND FINANCIAL ASSESSMENT

### ADE-reported district and school letter grades

District grade: **B**

Grade	Number of schools	Percentage of schools
A	0	0%
B	1	100%
C	0	0%
D	0	0%
F	0	0%
Not rated	0	0%

### Students who met state standards (AIMS)



### Student and teacher measures

Measure	District	Peer average	State average
Attendance rate	97%	95%	94%
Graduation rate (2012)	N/A	N/A	N/A
Poverty rate (2012)	27%	30%	25%
Students per teacher	9.4	13.9	18.3
Average teacher salary	\$47,484	\$41,809	\$45,264
Amount from Proposition 301	\$2,289	\$3,665	\$3,784
Average years of teacher experience	15.4	12.3	10.9
Percentage of teachers in first 3 years	0%	12%	19%

### Financial stress assessment

Overall financial stress level: **Low**

Measure: 2011 through 2013

Assessment

Number of students attending district	Small school adjustment
Spending exceeded operating/capital budgets	No overspending
Spending increase election results	No election held
Operating reserve percentage (max. 4%), trend	3.7%, Increasing
Years of capital reserve held	More than 3 years
Current financial and internal control status	Compliant

Stress level

